

HOUSE & LAND PACKAGE



PACKAGE PRICE

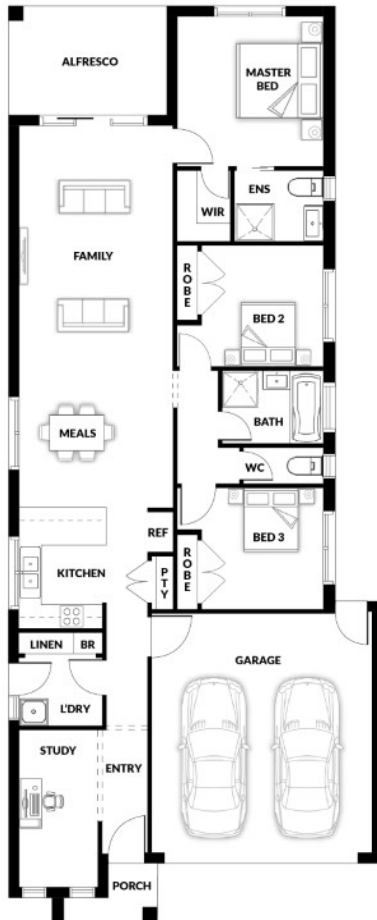
\$691,000*

Lot 248 Goldfinch Street,
Officer (Starling Estate)

BLOCK 324 m² | HOUSE 19.84 sq

COLOSSEUM 135A

3 1 2 2



PACKAGE PRICE INCLUDES:

- ✓ 7 Star Energy Rating
- ✓ NCC - Accessible & Inclusive Living
- ✓ 3.5KW Solar Panels Installed
- ✓ Tiled Shower Base
- ✓ Stone Benchtops
- ✓ All Floor Coverings

CRAIG WARD 0409 695 188

www.qualityhouses.com.au

* House and Land Package price correct at time of printing and subject to change without notice. Package price excludes external lighting, telephone services, customer account opening fees, stamp duty on land, legal fees and conveyancing costs including titles and property reports. See our New Homes Guide for full details of the standard inclusions. Standard Facade is included. Land supplied by developer. Land prices and availability are subject to change without notice. All house & land packages are subject to developers approval. Printed Date: 07-05-2626